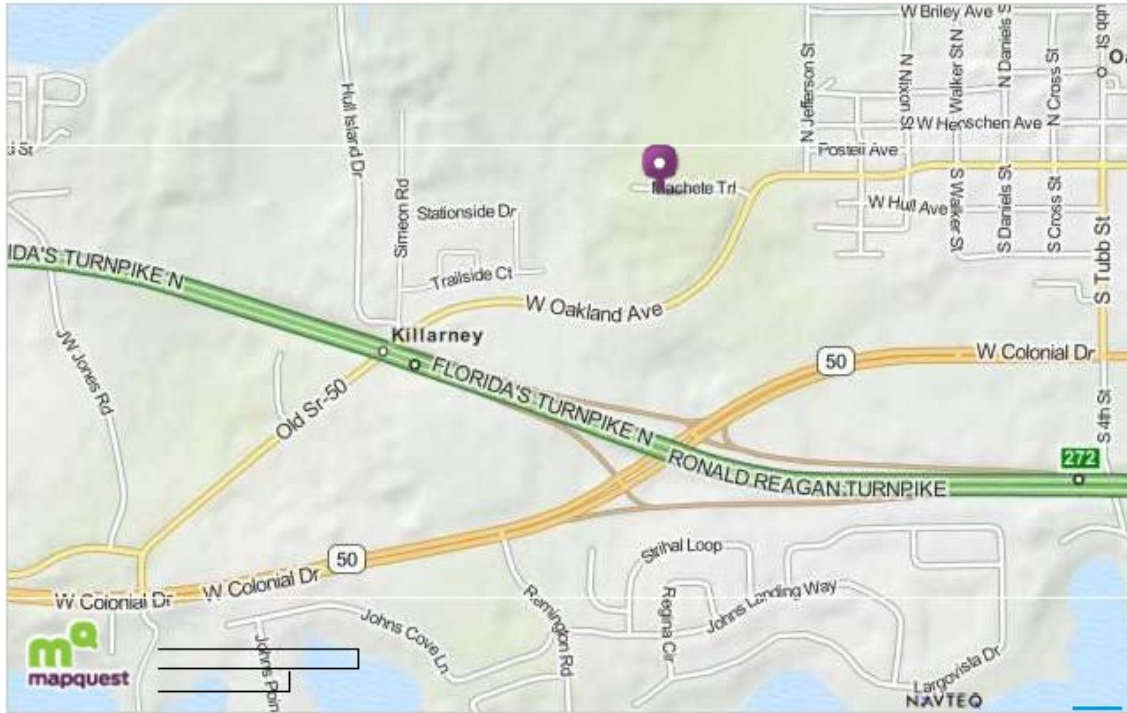


Directions to Oakland Nature Preserve

747 Machete Trail
Oakland, FL 34787
(407) 905-0054

IMPORTANT: 747 Machete Trail only appears on Mapquest not on most other search engine as Google. See map below. The directions on the Oakland Nature Preserve web site have not been updated, but will get you there.



The Mosaic Church is on the corner of Oakland Avenue and Machete Trail. Turn onto Machete like you are going to the church and you will see the signs for Oakland Nature Preserve at the end of Machete Trail. Park on the lower side of the parking lot and watch out for gopher tortoises crossing the parking lot area, babies and adults are on the move.

From Orlando take SR 408 west to the Florida Turnpike north.

From the Turnpike take Exit 272, Clermont/Winter Garden. You can turn right on SR 50 and go to Tubb Street, then left on Oakland Avenue, and right on Machete Trail; or turn left on SR 50, go to Oakland Avenue, turn right and then left on Machete Trail.

From 429 Tollway, take the Turnpike north to Exit 272.

From Winter Garden, Plant Street becomes Oakland Avenue,