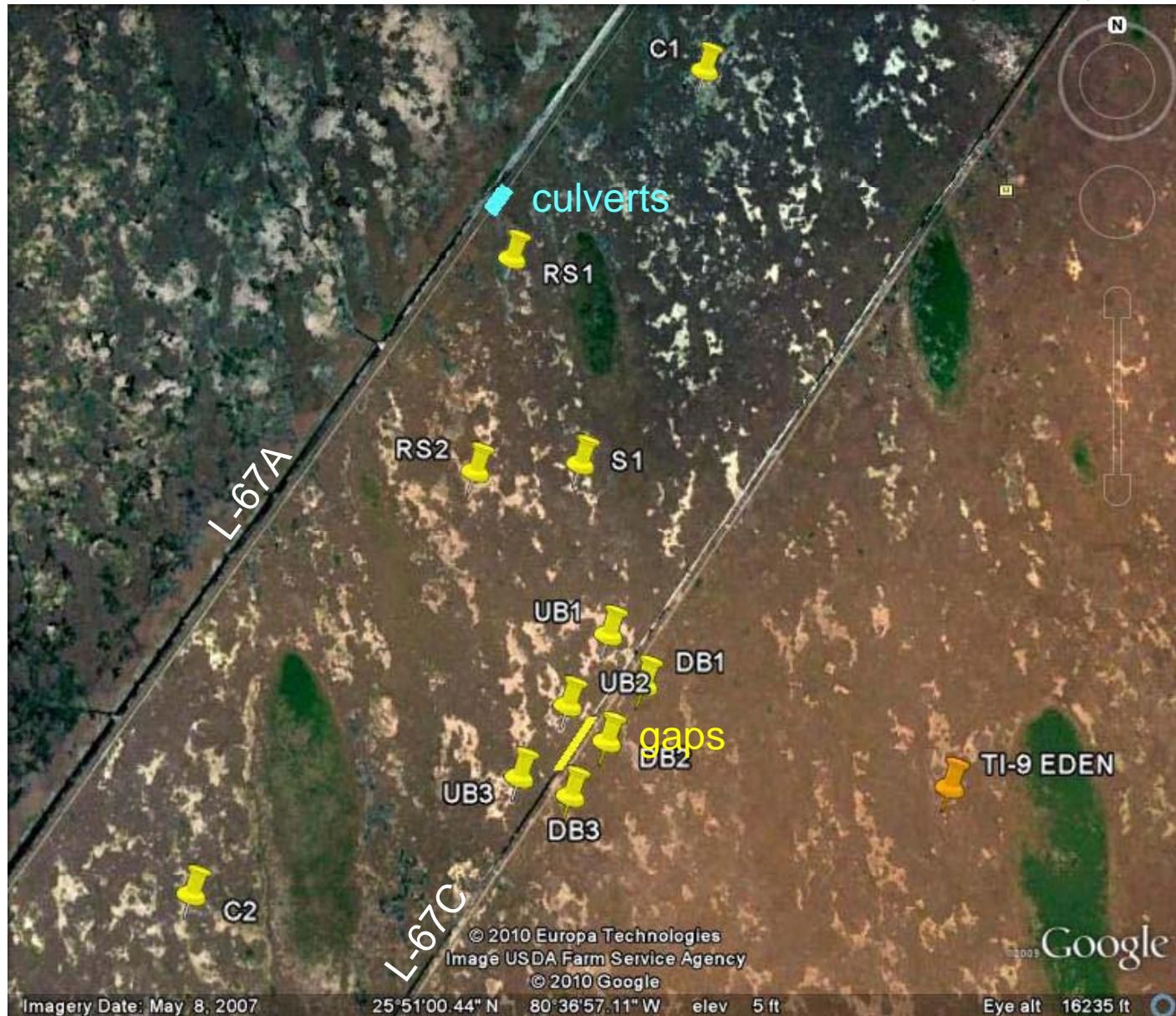
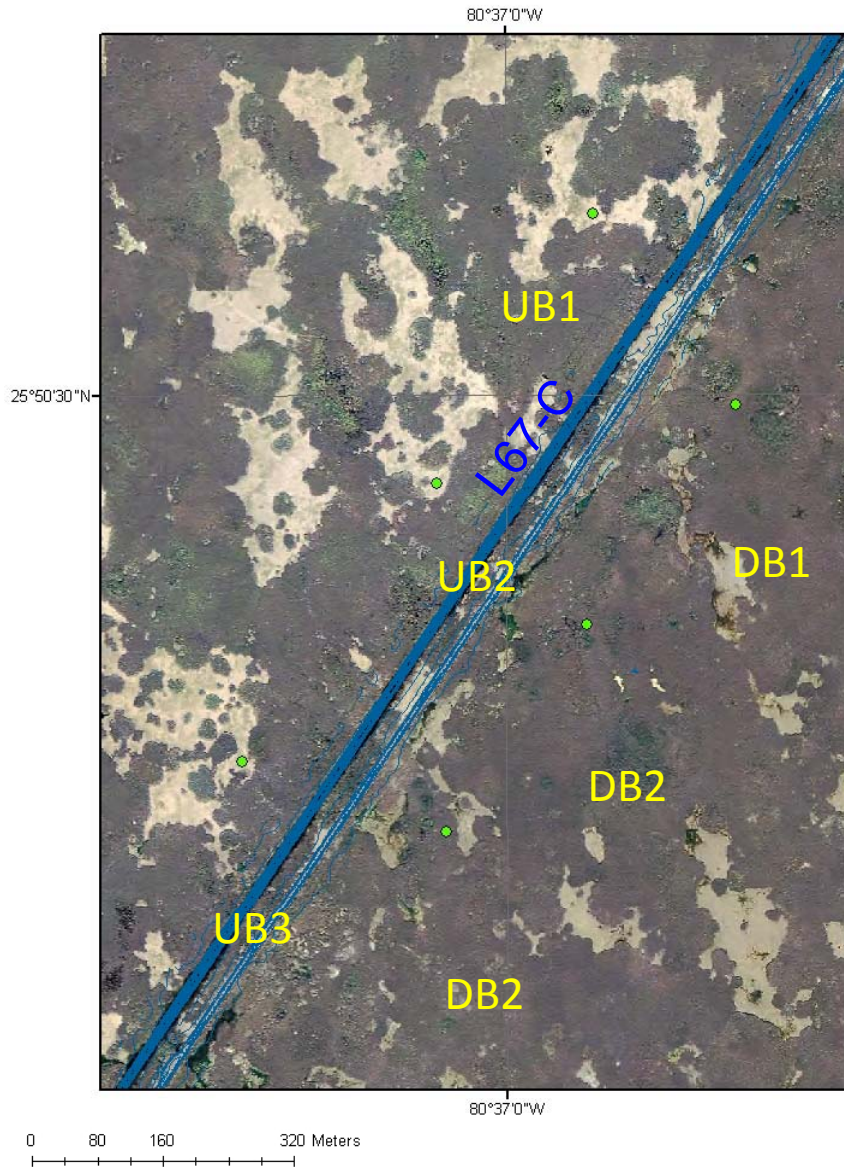


The DPM (Decompartmentalization Physical Model) is a large-scale test of the effects of flow on landscape dynamics



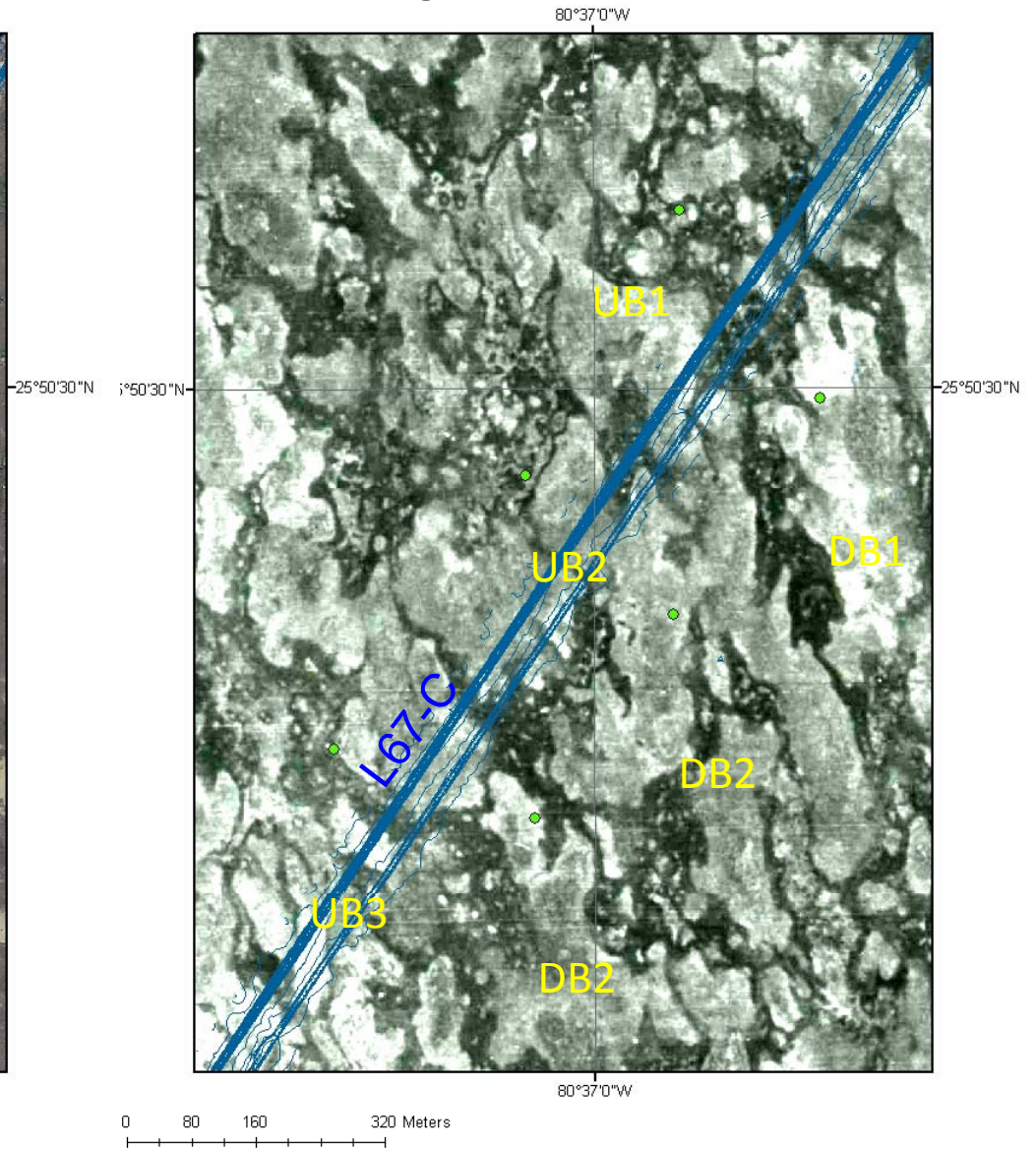


# DPM canal sites: 1940 vs. present



Present

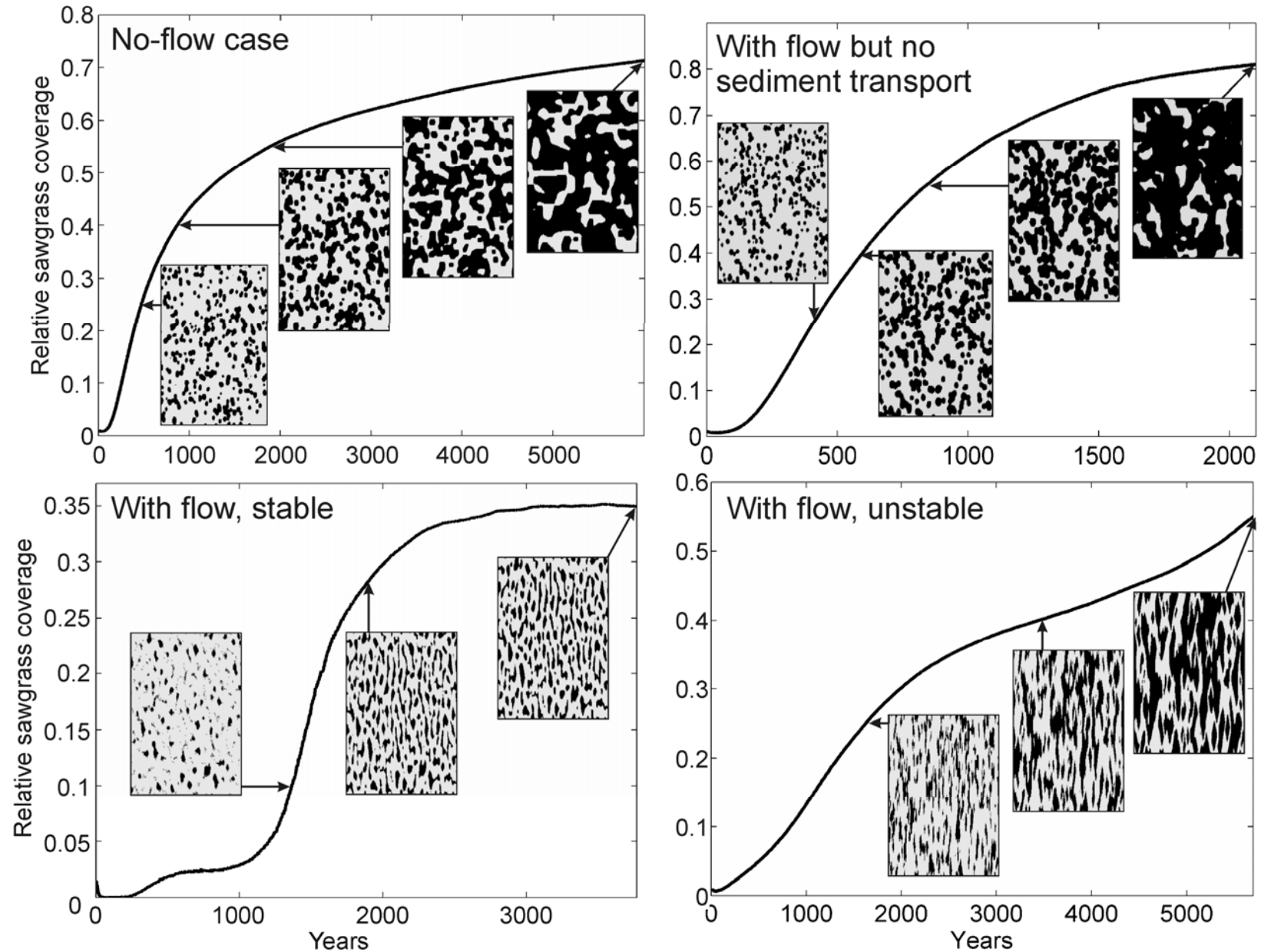
Sloughs light, ridges dark



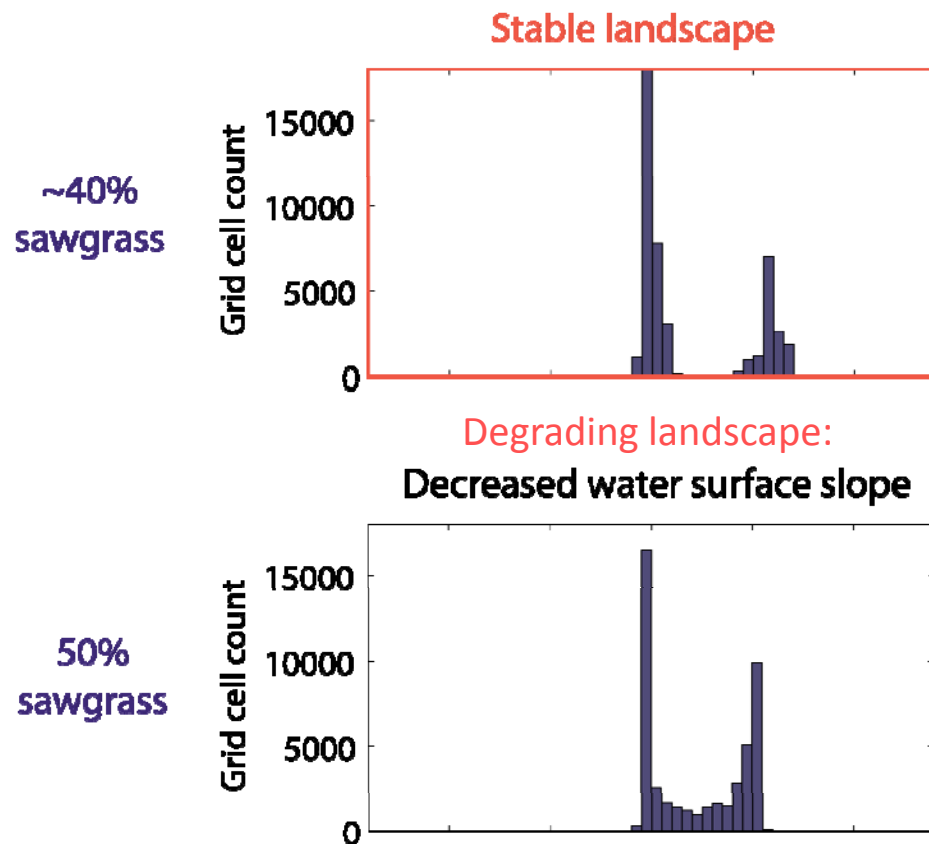
1940

Sloughs dark, ridges light

# Flow that redistributed sediment was required for stable ridge and slough landscapes



# Possible ridge and slough landscape performance indicators



Short-term:

- Peat elevation histograms
- Suspended sediment concentration-duration curves

Long-term:

- Remote sensing assessment of ridge coverage and slough connectivity